

Wellington TODAY

August 2006 | Issue 04

The Wellington gets the go ahead for Major Expansion



Artist's Impression of the Planned Circus Road Building

Westminster planners have given planning permission for the biggest expansion scheme at the Wellington Hospital since the opening of the North Tower in 1982.

The plans envisage a four storey, 32,000 square foot building on the site of 34 Circus Road, currently an administration building, and its adjacent car park. The new building will house new outpatient facilities.

The Wellington's Chief Executive Officer, Keith Hague, said the plans were drawn up because of the increasing

demand for new services at the hospital. "We are delighted to have been given planning permission because we need more capacity to be able to treat more day cases," he said.

"We will have superb facilities in the building including an operating theatre suite, a 20 bed day case ward, up to 40 private consulting rooms and additional imaging facilities. These will include the latest CT scanner, an MRI, nuclear medicine facilities, ultrasound and X-Ray.

It will mean that some of the outpatient surgery currently located in the existing

buildings will move into the new Circus Road complex releasing more acute surgical capacity in the North and South Towers. We already have an outstanding imaging department but we will be installing additional state of the art diagnostic and imaging equipment in the new building," he said.

It is hoped the new building will be open in 2008.

In this issue

£6 million development in diagnostics & imaging

The London Hand and Wrist Unit opens a new Network

Wellington People – Janene Madden

The Wellington goes totally digital

The new £3.5 million Cardiac Department opens

Wellington People



JANENE MADDEN
- Chief Operating Officer

The Wellington's new Chief Operating Officer, Janene Madden, started her career in medicine as a physiotherapist and initially she had no intention of becoming a manager.

"I loved working with patients over a period of time and helping to make them better – making a difference was very important to me," she said.

But one day she was asked to take charge of a team of physios and she found the management role fascinating. After taking an MBA at Henley Management College - "I never want to see another study book again!" she said - she was given the chance of managing an ophthalmology clinic in Harley Street, followed by a 30 bed community hospital in South London.

After several years, she got a phone call asking her to come and see The Wellington. She had a look around and immediately decided it was exactly where she wanted to be.

"I knew I wanted the job right away. This is such a tremendous hospital. Every type of medicine is practiced here; it offers a multidisciplinary approach; no day is ever the same; it is such a challenging environment and the people here are terrific," she said.

"There are so many possibilities at the Wellington and I spend a lot of time listening to doctors and consultants and our staff about what they would like to achieve for their patients. As a result we are now looking at developing a range of new services here – (more on those in the weeks to come.)

"And we are currently planning the future of the new building in Circus Road. So I think I have got one of the best jobs in healthcare right now," said Janene.

£6 million development in diagnostics and imaging completed on time

With the completion of the new Catheter Laboratories in the Wellington North building and the fully operational 64 slice CT scanner in the South Building Imaging and diagnostics department, a three year £6 million expansion and upgrading development has been completed on time and on budget.

The Wellington Hospital now has one of the most comprehensive imaging departments in the UK private sector and more state of the art equipment than can be found in many hospitals.

Leslie Gabriel, the hospital's Imaging Services Manager said The Wellington now offers a fast access 24x7 imaging capability. "The range of diagnostic equipment enables us to serve doctors and surgeons caring for patients with

the most complex conditions including cardiac problems, neurological disorders and liver disease, faster than ever," he said.

"A large number of orthopaedic patients use our services and a growing number of sports injuries patients too," said Leslie. "But it's not just the equipment that gives us the edge. We have a very high calibre of staff radiographers and our back office people producing the reports have also streamlined their

processes to produce the reports from specialists radiologists within hours of a scan," he said.

The Wellington Hospital Imaging Department has become the first hospital in the HCA International Group to install PACS (Picture Archiving and Communications System), which will mean the end of X-rays – often mislaid in the past, with the inevitable delays for patients and consultants alike.

The New 64 Slice VCT Lightspeed Scanner





The Primus System

The London Hand and Wrist Unit, based at The Wellington Hospital, has launched a new network around the Capital.

The unit, which opened in 1995, now has satellite units at The Portland, The Lister and London Bridge Hospitals. The expansion has been driven by the increasing demand for more local specialist treatment for conditions including trauma, work related pain

injuries, sports injuries, degenerative conditions and congenital deformities.

Hand Unit Manager, Nicola Goldsmith said patients wanted more convenient access to treatment. "Our aim is to provide the same high standard of care closer to our patients' homes and work places," she said. "Already we have received very positive feedback about the new network."

With a team of 14 orthopaedic and plastic surgeons liaising closely with six of the most experienced hand therapists in London, the unit is unique in offering a multidisciplinary approach to treatment for all upper limb conditions. After assessment, therapists administer the optimum treatment programme to suit a patient's clinical needs whilst considering their lifestyle. The unit's therapists are

multidisciplinary and fulfil the roles of physiotherapist, occupational therapist, nurse and plaster technician.

Patients also have access to the most comprehensive technology available in the private sector, including the Wellington's Primus Rehabilitation System, the only one of its kind in the private sector. Primus RS allows the team to design unique functional programmes for each patient.

Custom made thermoplastic and neoprene splints, exercise programmes, joint protection, scar management, and electrotherapy are among the treatments that are available. The unit also provides medico legal assessment and reports when required.

For more information please call 020 7483 5090.

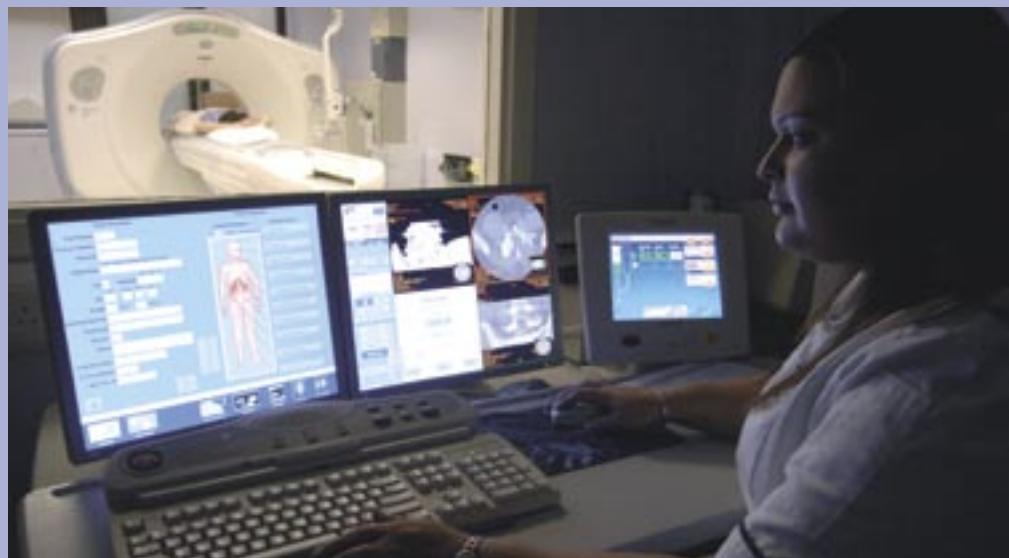
The Wellington goes totally digital

There'll be no chance of lost films now The Wellington Hospital has introduced its £2.4 million PACS (Picture Archiving and Communication System).

PACS will ensure that any image can be viewed anywhere at anytime. It allows images to be available on the desktop PCs immediately following verification by a radiographer. Radiologists are able to report on images from external sites via the Internet, giving the potential to dramatically reduce reporting times.

GPs and patients will be given images on CD (which will include image viewing software) rather than on conventional film, which is more difficult to store.

Because PACS offers a permanent digital archive of radiology data, in the future films will no longer be used or stored.



ACT Scan 6cup uploaded onto PACS

Leslie Gabriel, Imaging Services Manager said, "The introduction of PACs will help us to improve and speed up our service to patients and doctors in all clinical areas. As well as improved patient care and efficiency, we will be able to

eliminate the problem of mislaid films and the resulting delays."

PACS will be rolled out to all the other London hospitals in the HCA International group over the next six months.

The new £3.5 million Cardiac Department opens



One of the New Catheter Labs

The new Cardiac Department with its state of the art catheter laboratories and suite of non-invasive treatment rooms, has been officially opened in the Wellington North Tower.

The expanded department now has three catheter laboratories for interventional procedures and a spacious purpose built non-invasive treatment suite. The catheter labs are equipped with the very latest 3D patient mapping technology which allows the treatment of complicated and life threatening arrhythmias. The high tech fluoroscopy equipment significantly reduces X-ray dosage while increasing the accuracy of diagnosis and treatment.

This and other new equipment speeds up the treatment process and can render ablation more effective in some cases.

Cardiologist Dr Duncan Dymond said the new facilities set the standard for the private sector. "With these facilities and the tremendous team we have here, we can provide the highest level of care that is available anywhere in the UK and I am delighted to see the completion of this major project," he said.

Cardiology Department Co-ordinator, Ruth Altmiks said the redesign and re-equipping of the department had increased capacity and efficiency. "We are able to carry out more electrophysiology procedures than before and we offer rapid access to patients and their doctors," she said.

"We can usually offer appointments on the same day and reports will be despatched within 24 hours of the examination. We offer radio frequency ablation and cryo-ablation and the full range of invasive procedures. All our staff are highly trained and specialised in their field" said Ruth.

The non-invasive suite offers the full range of diagnostic procedures including 24 hour ECG and blood pressure monitoring, echocardiography, pacemaker and defibrillator function checks and resting and exercise ECGs.

The Wellington Cardiac Department has a team of over 30 cardiologists supported by 27 cardiac physiologists, radiographers, and specialist nurses.

Melissa Whelan joins The Wellington

Melissa Whelan (pictured right) has been appointed as Chief Human Resources Officer at The Wellington.

Melissa has joined us from the Lloyds TSB Group where her key focus was performance management. Her first role in healthcare was as HR Consultant with the Nestor Healthcare Group. "The Wellington has always had a reputation for recruiting some of the best qualified staff in the private medical sector and I am thrilled to be joining the hospital at this time." she said.



HCA

The Healthcare Company

The Wellington Hospital
Wellington Place
St. Johns Wood
London NW8 9LE

Tel: 020 7586 5959

Fax: 020 7586 1960

Enquiry Line: 020 7483 5148

www.thewellingtonhospital.com